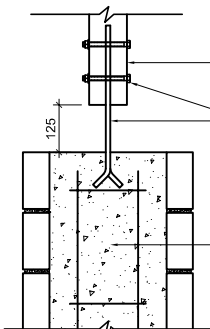


450x450
VILLAGE STONE
COLUMN BLOCKS

(A)

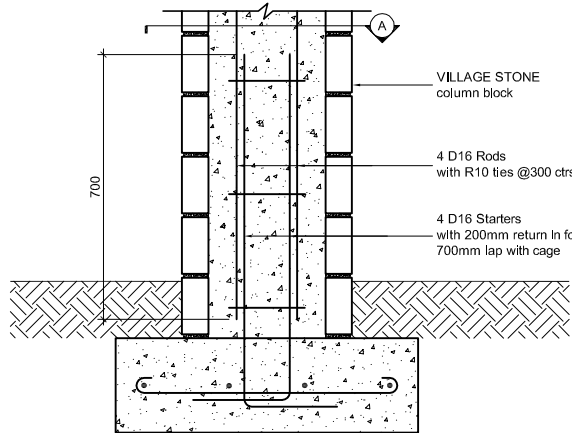


100x100 H3.2 Timber Post

Galv. Bowmac post bracket
2 M12 bolts

125

vibrate concrete fill when
placing concrete in column,
make sure column sections
do not blow apart.



VILLAGE STONE
column block

4 D16 Rods
with R10 ties @300 ctrs

4 D16 Starters
with 200mm return in footing
700mm lap with cage

700

SECTION

800x800x250
Concrete Footing
with 4 D12 each way

NOTE: ALL BUILDING MUST COMPLY WITH NZS 3604: 1999 AND THE NEW ZEALAND BUILDING CODE

Technical Disclaimer: This information is intended solely as a guide for use of Village Stone products. Before using Village Stone product you should ensure that the product is suitable for use in the specific application. Nothing in this information constitutes a statement of fitness for particular purpose - appropriate expert advice should always be obtained. Village Stone makes no warranty regarding the use of this information with non-Village Stone product.
© Village Stone, New Zealand.



VILLAGE STONE VENEER DETAILS

Column Detail

scale 1:20

SK11